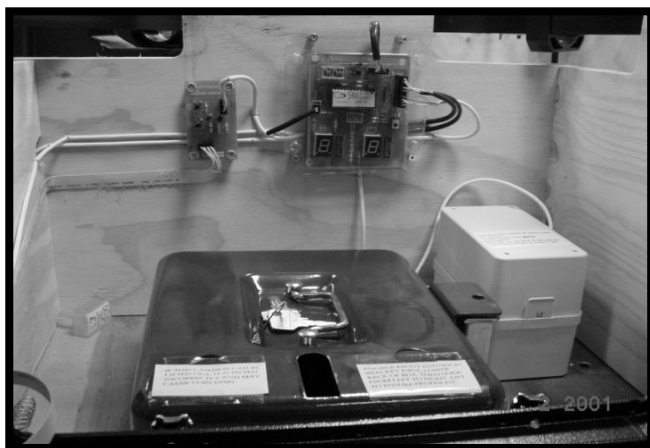
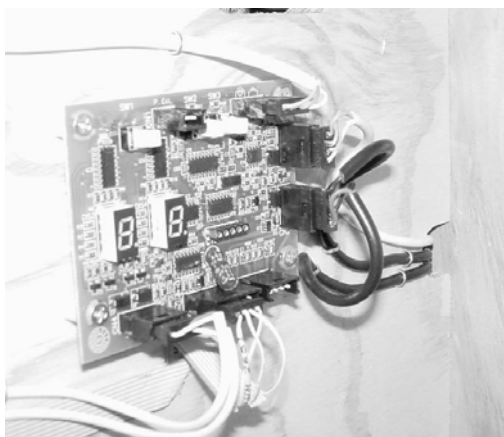


## SAMIK 2 or DUAL MECH BOARD (WITH TIMER INTERFACE BOARD)

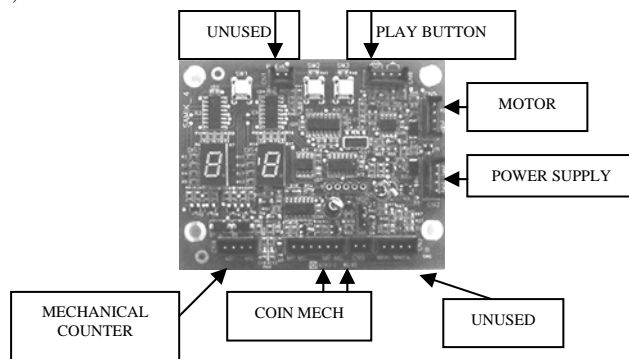


NOW OBSOLETE, TABLES PRODUCED UP TO END OF 2001.  
 USES JOFEMAR TREMOYA T20b OR T21b TOTALISER MECH.  
 POP CHANGED USING THE MECH DIP SWITCHES.  
 BLACK, 12 VOLT MOTOR.  
 IF PCB NEEDS REPLACING, MORE ECONOMIC TO UPGRADE TO SAMIK 4.

## SAMIK 4

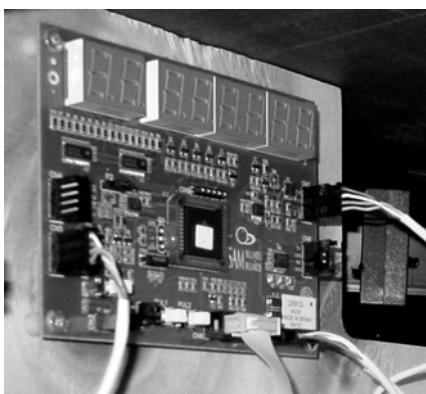


TABLES FROM JAN 2002 TO PRESENT  
 USES JOFEMAR TREMOYA T21b TOTALISER MECH.  
 POP CHANGED USING THE MECH DIP SWITCHES.  
 ORANGE, 6 VOLT MOTOR.



## TRIBAND or SAMIK 3

BATTERY OPERATED TIMER SYSTEM. TABLES FROM 2003 TO PRESENT  
 ORANGE, 6 VOLT MOTOR.



USES JOFEMAR TREMOYA T21b MECH, *CODIC VERSION*. NOT THE STANDARD TOTALISER. NO ADJUSTMENTS CAN BE MADE USING THE MECH SWITCHES, DO NOT ATTEMPT TO CHANGE POP ON THE MECH, THIS WILL DISABLE IT.

